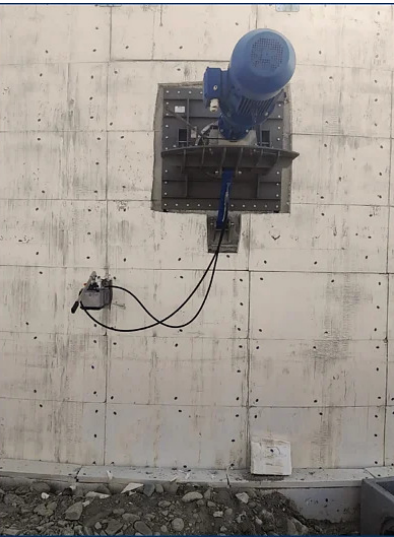


Agitators With External Electric Motor

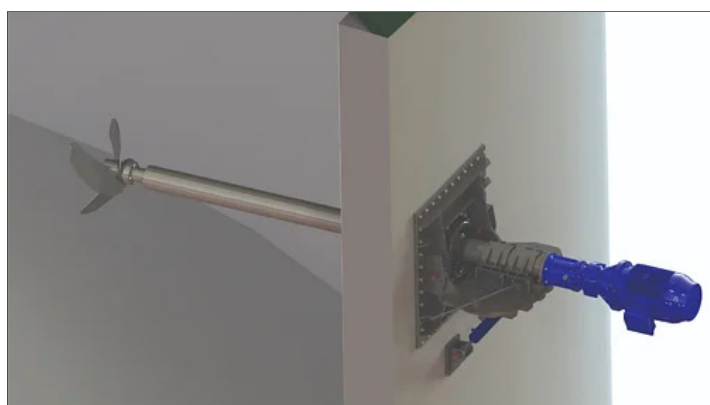
HMT



HIGHLY EFFICIENT, RELIABLE AND PRACTICAL

HMT Agitators with External Electric Motor are engineered for optimal performance in anaerobic digesters, digestate tanks, and pre-tanks. Their specially designed stainless-steel propeller ensures efficient mixing, even in effluents with high solid content. The modular design allows for various propeller shapes and sizes, optimising the balance between performance and energy efficiency.

These agitators deliver powerful mixing with a dynamically balanced 3-blade stainless-steel propeller. The HMT B model features bi-directional adjustment for increased flexibility. Designed for side-of-tank installation, they integrate seamlessly with a concrete mounting frame.



HMTB



HMTV

Product Range Performance

TYPE	Power (kW)	Speed (rpm)	Ø Propeller (mm)	Voltage (V)	Frequency (Hz)	Thrust (N)	Flow Rate (m³/h)	Nom. Power (A)
HMT B 110	11.0	280	650	400/690	50	2,902	5,790	22
HMT B 150	15.0		740			3,885	8,280	29
HMT B 185	18.5		770			5,780	11,690	34
HMT B 220	22.0		800			5,998	12,300	40
HMT V 185	18.5	140	1,200			6,584	20,064	34
HMT V 220	22.0		1,300			7,242	22,070	40

Benefits

- ✓ **Outstanding energy savings:** Thanks to innovative propeller profile, high energy efficiency is achieved at minimal long-term costs.
- ✓ **Advanced mixing:** Engineered 3-blade propeller offers powerful mixing effect, ensuring homogeneity in mixing processes.
- ✓ **Maximum versatility:** Bi-directional adjustment is practical and flexible, adapting to specific process requirements.
- ✓ **Easy installation and maintenance** outside the tank simplifying operations, reducing downtime and associated costs.

HMTB

Conditions of application

- Max. slurry temperature: 55 °C
- Max. dry matter: 14%
- pH of the treated liquid: 5.3 ~ 8.5

Electric motor and gearbox

- IE3 motor 11.0 / 15.0 / 18.5 / 22.0 kW, 400/690 V, 50 Hz, 1,450 rpm IP 55
- PTC Thermal probe as overheat protection
- Planetary gearbox ratio I = 5.2

Transmission

- 304 SS external tube \varnothing 168.3 mm
- Modular 304 SS internal transmission tube \varnothing 88.9 mm
- Oil bath drive shaft \varnothing 35 mm
- Elastic coupling between gearbox and drive shaft

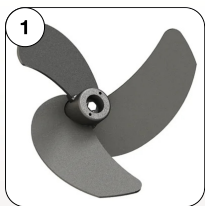
Propeller

- Dynamically balanced 3-blade 304 SS propeller

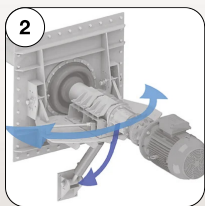
- Large propeller: \varnothing 650 / 740 / 770 / 800 mm

Other features

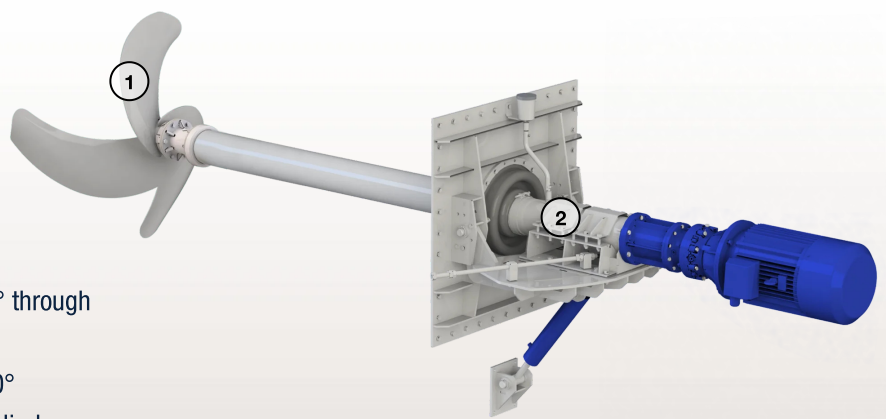
- Oil filling and level control pot
- Bearing casing with cemented carbide mechanical seal
- Independent 304 SS shaft \varnothing 50 mm and couple of tapered roller bearings
- Agitator structure completely manufactured from 304 SS
- EPDM rubber sealing membrane



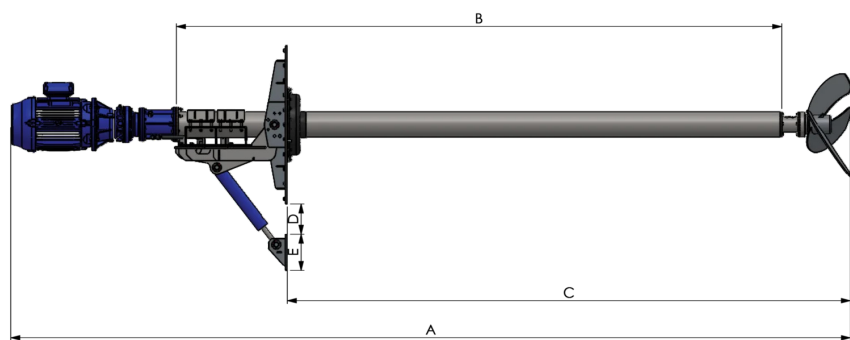
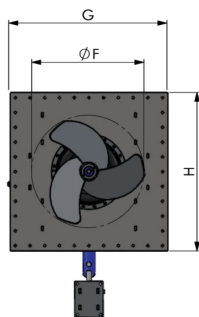
304 stainless-steel
3-blade propeller



Bi-directional adjustment
- Horizontal adjustment $\pm 25^\circ$ through threaded rod
- Vertical adjustment $0 \sim -30^\circ$ through manual hydraulic cylinder



Overall Dimensions



TYPE	Power (kW)	Length (m)	A (mm)	B (mm)	C (mm)	D (mm)	E (mm)	F (mm)	G (mm)	H (mm)
HMT B	11.0	3	4,560	3,000	3,750	200	240	650	1,050	1,050
		4	5,560	4,000	4,750					
	15.0	3	4,605	3,000	3,750					
		4	5,605	4,000	4,750					
	18.5	3	4,630	3,000	3,750					
		4	5,630	4,000	4,750					
	22.0	3	4,670	3,000	3,750					
		4	5,670	4,000	4,750					

HMTV

Conditions of application

- Max. slurry temperature: 55 °C
- Max. dry matter: 14%
- pH of the treated liquid: 5.3 ~ 8.5

Electric motor and gearbox

- IE3 motor 18.5 / 22.0 kW, 400/690 V, 50 Hz, 1,450 rpm IP 55
- PTC Thermal probe as overheat protection
- Parallel axis gearbox ratio I = 10.4

Transmission

- 304 SS external tube \varnothing 168.3 mm
- Modular 304 SS internal transmission tube \varnothing 88.9 mm
- Oil bath drive shaft \varnothing 50 mm
- Elastic coupling between gearbox and drive shaft

Propeller

- Dynamically balanced 3-blade 304 SS propeller

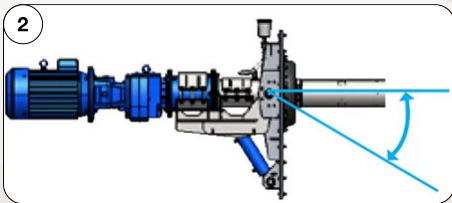
- Large propeller: \varnothing 1,200 / 1,300 mm

Other features

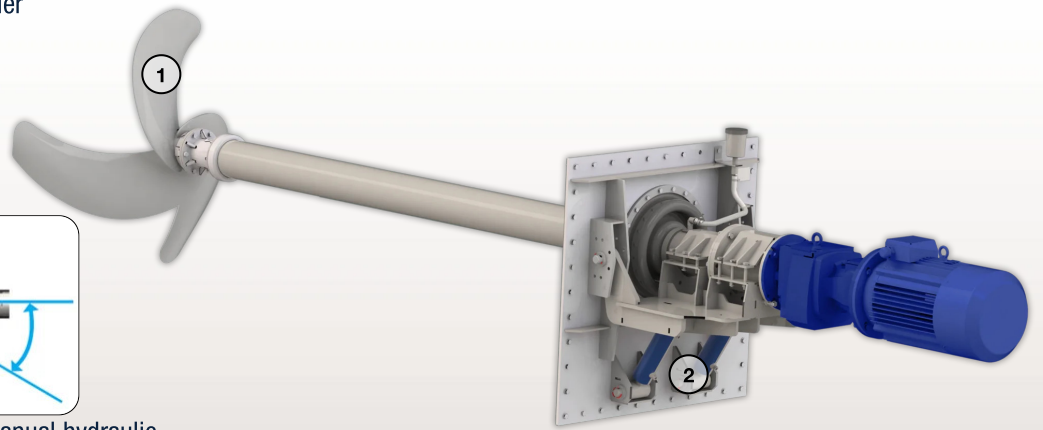
- Oil filling and level control pot
- Bearing casing with cemented carbide mechanical seal
- Independent 304 SS shaft \varnothing 60 mm and couple of tapered roller bearings
- Agitator structure completely manufactured from 304 SS
- EPDM rubber sealing membrane



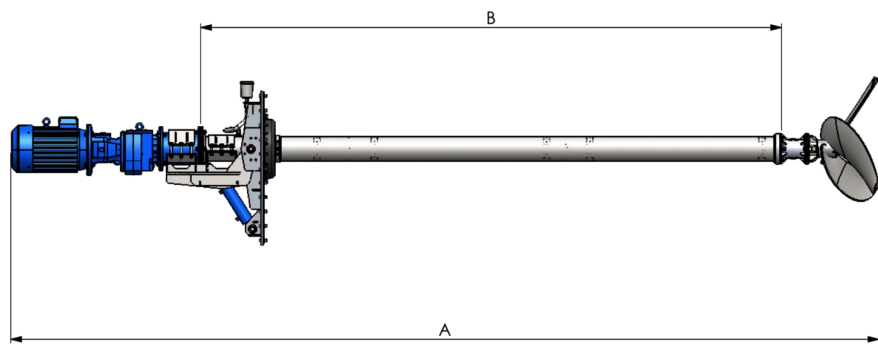
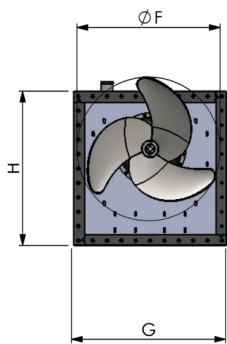
304 stainless-steel
3-blade propeller



Vertical adjustment 0 ~ -30° with manual hydraulic cylinder



Overall Dimensions



Model	Power (kW)	Length (m)	A (mm)	B (mm)	F (mm)	G (mm)	H (mm)
HMT V	18.5	3	5,230	3,000	1,200	1,070	1,070
		4	6,230	4,000			
	22	3	5,270	3,000	1,300		
		4	6,270	4,000			

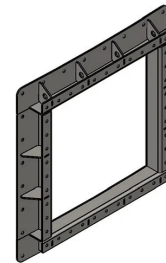
HMTB



HMTB - Double installation configuration



Wall mounting frame
Ideal for newly built tanks

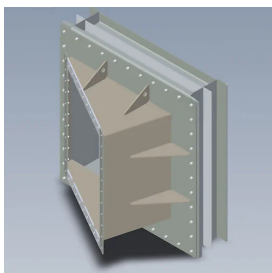


Fixing with curved external dowel frame
Ideal for existing tanks

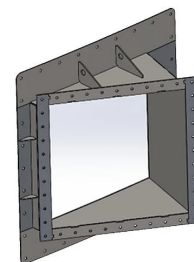
HMTV



HMTV - Double installation configuration



Fixing with wall frame + External sloping box
Ideal for newly built tanks



Fixing with curved external dowel box
Ideal for existing tanks

